



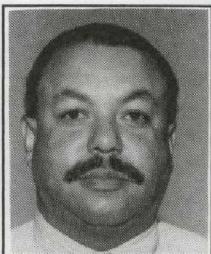
INTERCOM

OFFICIAL PUBLICATION OF THE
CALIFORNIA ASSOCIATION OF SUPERVISORS OF CHILD WELFARE AND ATTENDANCE
JANUARY, 1994

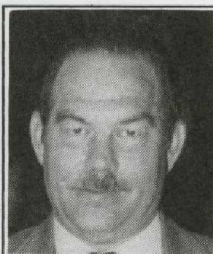
William P. Booth, Editor, 2937 E. San Gabriel, Fresno, CA.



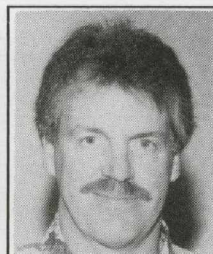
LILLIE WILSON
CASCWA State
President



GREGG BASS
CASCWA President
Elect



GIL AWALT
CASCWA State
Vice President



BOB BURGESS
CASCWA State
Treasurer



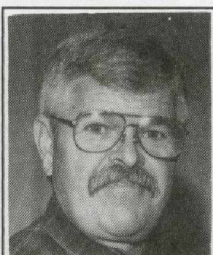
CHRISTINE SMITH
CASCWA State
Secretary



PAT GARDETTO
President
Bay Section



CHRIS MIZANI
President
Delta Sierra Section



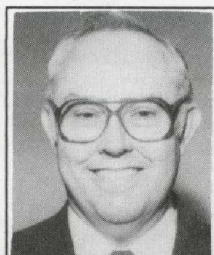
AL BAUM
President
San Joaquin Section



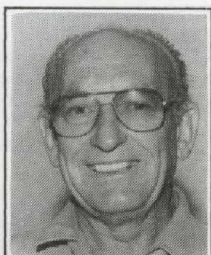
AGNES MOSS
President
Southern Section



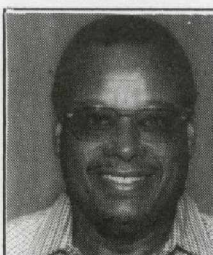
BOB BRAZIL
CASCWA Immediate
Past President



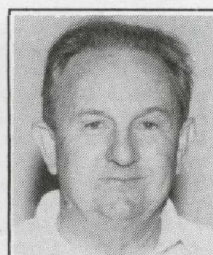
LEE LUNDBERG
Legislation



JEAN STOVALL
Professional Standards



RICHARD DAVIS
Retired Members



BILL BOOTH
Editor, Intercom

YOUR CASCWA EXECUTIVE BOARD 1993-1994

IN THIS ISSUE :

- * SPECIAL PULLOUT SECTION : New Sexual Harassment Laws
- * SECTION REPORTS : Local CASCWA Activities
- * SPRING CONFERENCE : Planning Information
- * OTHER STUFF : Too Great to miss !

GREETINGS FROM THE CASCWA PRESIDENT AND WISHES FOR A GOOD NEW YEAR



LILLIE WILSON
CASCWA State
President

Welcome to the New Year ! By now, I Am sure that most school districts have spent many working hours on the development of policies And procedures for "choice" intradistrict and interdistrict permits. It is well to remember when developing these policies that the regular channels for inter and intradistrict permits were not changed with the new legislation. Therefore, the real challenge is going to be how many slots are going to be held for regular hardship/ child care permits.

The question is whether these child care permits will be required to be in a "big spin" lottery with "choice" requests and whether or not Boards will choose to implement the interdistrict choice legislation.

Another challenge that must be faced as we move into the new year and plan for the mandated "choice intradistrict attendance" is the issue of ethnic balance. Each school (Board) will have to define what it determines to be "ethnic balance" for a district and/or a given school . In some communities, this will not be a concern. If it is, then the school Board should establish, up front, what is to be determined to be appropriate ethnic balance.

This brings us to the next most interesting activity in the making:

"THE SPRING CONFERENCE" In Fresno !

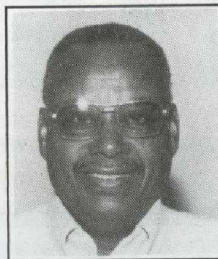
The conference Committee is working diligently to ensure that the participants will be provided with the very latest, most up to date information on the above issues and implementation of the new expulsion provisions. Many of the gray areas in these new laws have not been addressed legislatively. That is something we may wish to pursue as an organization.

CASCWA continues to keep uppermost in its efforts the need to respond to the critical needs of members. As we are required to wear more and more hats, the organization faces new challenges in trying to keep its members up to date on legislation, strategies, programs and other information to help in meeting our growing obligations.

To this end we look forward to seeing you at the
SPRING CONFERENCE !



OUT N' ABOUT WITH RETIREES



RICHARD DAVIS
Retired Members

SOUTHERN SECTION

Talked with JACK ERICKSON recently who has been very busy working to revise the law books. He informed me that the southern section retirees are still meeting for lunch at the CLAIM JUMPER restaurant the second Wednesday of each month 11:30am 17th and Tustin in Orange County. All are welcome to join.

FRED CARTER attended the San Diego Jazz Festival recently and had a great time.

STEVE ELLISH had trip to Lake Tahoe planned and changed his mind when the Sierra Snow storms arrived early. Wise choice!!! JOE O'SULLIVAN is recovering well from recent surgery. JIM MILNER & BEV traveled to Norte Dame this year to attend the big game and took a grand tour of the campus. CARL PRICKETT now residing in Roseburg, Oregon, is having much fun doing the dramatics at Ashland. Carol also is now the grand marshal at Roseburg's finest golf course . In his spare time he is volunteering at the Veteran's Hospital.

SAN JOAQUIN SECTION

BILL BOOTH has been really busy since retiring, playing with his home computer trying to master all its potential. They recently toured the Civil War Battlefields in Pennsylvania, Virginia and Maryland. They are planning a trip to China in March. Bill also teaches part time at Pacific College. He just completed organizing, planning and conducting the National Model Airplane Contest, in Taft, California. This is the way to enjoy retirement.

BAY SECTION

FRANCIS TUCKER visited me last week. We had an enjoyable time sharing new experiences. He is still teaching part-time at Solano College. He is leaving December 10, 1993, for a trip to India. It is nice to see him enjoying life so much. Good luck on your journey.

DELTA/SIERRA SECTION

SARA RAY WILEY and Roscoe are still living in The Dalles, Oregon and doing quite well. Sara is currently visiting her son Billy who is recovering from a recent Ski accident. I don't know how long she will be in Los Angeles, so give her a call. I think they are making plans to return to hopefully, to the Sacramento area sometime next year.

I have been enjoying my grandson lately as he finishes his first year of Soccer. They went undefeated this year: 9-0. I'm just waiting to meet in an Leandro some day. How about that Lee?? Watching those little 6 year olds and under play soccer is really a treat. We had as much fun as the kids. I'm working on his physical skills and his grandmother on his mental skills. We are doing quite well too !!!! I am still doing consulting services for the Sacramento County Office of Education

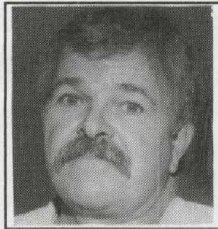
and enjoying it quite well. We had a good year of fishing and a bountiful garden.

If anyone of you out there have information on CASCWA retirees, please call me (916) 393-3852 or FAX me 1-916-393-2409. HAVE A HAPPY HOLIDAY.

OVER 'N' OUT



SAN JOAQUIN SECTION PLANS SPRING FRESNO CONFERENCE



AL BAUM
President
San Joaquin Section

Greetings and "Happy New Year" to all our "CASCWA'ns" from the foggy San Joaquin Section. This new year will be most exciting with us hosting the fantastic "Spring Conference" in Fresno in May. We've put together the most "Dynamite, Dynamic and Dangerously Didactic" program in CASCWA's history !!!! - thanks to Gil Awalt we've been growing by leaps and bounds . Most assuredly, we'll take membership "growth" honors

this year). Anyway, about the "Spring Conference": Hilton Hotel, with unbelievable rates, a "Pre-Conference" one-day Seminar that is made for just about anyone that has anything to do with 'kids', PLUS extra added attractions for professional growth, prosperity and just good ole' "fun". Tom Black and Joe Brucia are our new Section Legislative representatives. Betsy Reilly is doing a bang-up job on membership. Debbie Daniels is doing great as our Section Secretary thanks to a lot of you guys and gals for maintaining our Section's "State of the Art" status !!

Our next Section meeting will be in Fresno, Jan, 21, at the Fresno Hilton, 10:00 - 2:00, includes lunch, pre-conference tour and Section meeting.

So guess, that's about it for now. Hope to see all of you (I mean ALL OF YOU) at the Spring Conference - more info. will be sent to all you soon. Any questions, r.e., the Spring Conference - Call Gil Awalt: (209) 297-7382. Bye for now!!

Thought for the Day: "Every man I meet has come to teach me" (Zen Proverb)

NEW YEAR WISHES FROM DELTA-SIERRA'S PRESIDENT



CHRIS MIZANI
President
Delta Sierra Section

Happy New Year!
To all our new and old members, our section would like to wish you the best and a productive New Year.

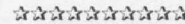
I want to Thank all for the wonderful support and help with our last fall conference here in Sacramento. The conference was a success and a great opportunity to see our friends from Southern Bay and San Joaquin Sections. Many thanks to our Conference

Chair Dr. Don Smith and Gwen Marshall for the wonderful fliers, materials and registration support. I know May Powell was grateful for this assistance also because it gave her time to do a great job on the budget.

Our bus trip to Lake Tahoe was a huge success and fun was had by all. What a wonderful way to network without phones or interruptions. This conference also boosted our membership for many sections. Great Job!! Delta-Sierra is now busy to carry on with the rest of the year. Our next activity is a workshop that centers around "Hate Crimes" in the educational setting. The workshop will be here in Sacramento and our District Attorneys Office will present this topic. Mark your calendars for February 25th, 1994 from 10:00 to 1:30. The cost will be \$18.00 that includes lunch. The fliers will be out soon so watch for them in the mail.

I would like to credit Bob Burgess from Alameda County for the inspiration of this workshop. He did such a great job at the fall conference, but it made me realize that this unfortunately is a topic that needs to be addressed by all educators.

Look forward to seeing our new, and old members at our spring conference.



BAY SECTION PRESIDENT DESCRIBES BUSY SPRING SCHEDULE



PAT GARDETTO
President
Bay Section

Although the winter months are upon us and the outside temperature has dropped considerably, Bay Section has been working feverishly to conduct programs that provide current information on several pressing issues. A survey was taken, and it was decided that the majority of our membership was interested in exploring ideas that addressed issues of safe schools and student discipline. Thereafter, immediate action was taken to School/Law Enforcement Partnership CADRE, Bay Section sponsored a "kick-off" mini-conference, counselors, and SARB members. I am pleased to report that this workshop was a major success. We were fortunate to hear from Assemblywoman Barbara Lee, who spoke on hate crime and issues relating to the safety of children. Other speakers included Ann Paanizzon, Director for the Center for Law Related Education; Chief Robert Maginnis of the San Leandro Police Department; Gwen Estes, Community Parent Activist; Bob Burgess, the Coordinator of Student Services for ACDE and Lillie Wilson, State CASCWA President. They were all inspirational.

The conference was a worthwhile meeting designed, of course, for professional enhancement. Our membership increased by forty-seven new members. We are now considering the possibility of organizing a similar program to start the 1994-95 school year.

On November 19, 1993, we held a luncheon meeting at

the Holiday Inn in Pleasanton, California. Tad Kitada, Coordinator of Prevention Services, Placer County Office of Education was our featured speaker. His topic related to issues concerning status offenders. The next Bay Section meeting will be held at the same place, Holiday Inn in Pleasanton, February 4, 1994.

Plans are underway for the Fall conference. Be sure to save these dates; October 13 and 14, 1994. You are all cordially invited to attend. More information will be available by the next publication of the Intercom. Until then, I hope you find peace and happiness in 1994. HAPPY NEW YEAR.

SOUTHERN SECTION STRESSES SUPPORT FOR SARB



AGNES MOSS
President

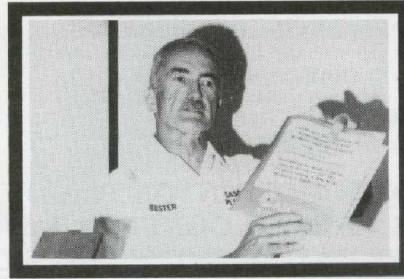
In October, Southern Section attended the CASCWA Fall Conference, "Networking Unlimited". Both speakers were excellent, Rita Wirtz and Richard Simpson from Speaker Willie Brown's Office. We appreciate all the hard work Delta Sierra did to organize the conference.

The State SARB Conference, November 9, was held at the restful environment of Kellogg State Polytechnic University. We commend Shirley Abrams of the Los Angeles County Office of Education and the School Attendance Review Board on the informative workshops. Southern Section CASCWA was well represented, presenting workshops and assisting with the conference. It was great to meet and chat with so many fellow CASCWA members. District Attorney Gil Garcetti was an outstanding luncheon speaker and reinforced his belief in Child Welfare and Attendance work and the SARB process.

One of the benefits of CASCWA is the comradery and support that develops over the span of time. Southern Section membership is growing, if you have not renewed your membership yet please join CASCWA.. Our main goal this year was to expand and promote the work of Child Welfare & Attendance, to grow professionally, to keep members informed of recent law/legislative changes, current trends and exemplary programs. Legislation for the 1994-95 school year will be challenging to Child Welfare and Attendance personnel. Issues appear to focus on areas such as:

- Immunization Student Achievement
 - Schools of Choice Restructure and Reform
 - Campus Safety Credentialing
 - Attendance Child Abuse
 - School Health Clinics Civil Rights
 - Categorical Reform State & Federal (Chapter I)
 - Private Corporations Managing Schools
 - Local Board Authority to Raise Taxes
- If you would like to join one of our monthly meetings held on the first Friday of each month, please telephone Agnes Moss or Karen Saunders at (213) 742-7547. Have a Happy New Year.

IN REMEMBRANCE OF MILT DOOLEY



It is with deepest regret that we inform you of the passing of Milt Dooley, Consultant in the Los Angeles County Office Education Attendance and Administrative Services Unit.

Milton was presented the CASCWA OUTSTANDING SERVICE AWARD in May of 1992. He served as Child Welfare and Attendance Supervisor and Consultant for more than 20 years. He also served in many capacities on the Southern Section CASCWA Executive Board. He was known throughout the State of California for his knowledge and service, particularly in the area of attendance accounting.

Milt will be greatly missed by his colleagues, family and friends.

ARE YOU SOMEONE ELSE ?

Sometime in the near future, Delta/Sierra like the other sections and the state board will begin the process of recruiting people for office. The Delta/Sierra section nominations and election committee like the state committee are having a difficult time interesting new people to get involved in the association activities. I think we are all aware of the changing role of CWA personnel making it difficult to retain old members and to bring in new people.

I came across the following information while reading The Sacramento Northeast Express. "Someone Else" the author unknown. It seems to somewhat fit our organizations dilemma.

SOMEONE ELSE. Someone's absence or refusal to get involved creates a vacancy that is difficult to fill. ELSE have been with us for many years. SOMEONE did far more than the normal person's share of work. Whenever leadership was mentioned, this wonderful person was looked to for inspiration, as well as results. "SOMEONE ELSE can work with that group". Whenever there was a job to do, an activity to lead, or a meeting to attend, one name was on everyone's lips -- "Let Someone Else do it".

SOMEONE ELSE was a wonderful person, sometimes appearing superhuman but a person can only do so much. Were the truth known everybody expected too much of SOMEONE ELSE. Now, SOMEONE ELSE is gone !! We wonder what we are going to do. SOMEONE ELSE left a wonderful example to follow, but who is going to follow it? Who is going to do the things that SOMEONE

SOMEONE ELSE did? Now is the time for all CWA people to participate in their section and state activities. Remember, we can't depend on SOMEONE ELSE any more.

I was really reminded of the late Dale Turner while writing this article because she was SOMEONE ELSE.

Provided by Rich Davis

☆☆☆☆☆☆☆☆

DO WE CREATE SOME OF OUR OWN PROBLEMS ?

Junior and Sis trudge through the door and hand you their report cards. A lot is riding on this: the kids' education their futures, not to mention allowance and whether they'll be grounded. But some reason they don't seem as worried this time as they usually are at report card time.

Maybe you think, Sis pulled the C up to a B in English, or Junior went from a D to a C in math. You glance at the card. And you find that Junior is "connecting". Sis is "expanding". They're both "developing". Wha?

This is the report card that parents in 23 Houston schools are faced with. They can't be blamed if they ask, "What in the blue blazes does this mean?" Does "connecting" mean the kid is scoring dope? Does "expanding" have something to do with a physical education class?

None of the above. It's just the Houston school district's way of letting parents know how their children are developing socially and emotionally in early grades. The kids are pegged to one of eight stages; discovery, exploration, developing, expanding, connecting, independent, application and synthesis.

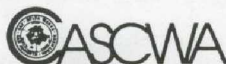
What, no empowerment?

Of course, this brave new grading system doesn't appear to tell Mom and Dad whether Johnny or Susie can read, or add. But we are in a new age.

Some parents aren't crazy about the system. The mother of a kindergarten student said her husband "went through the roof. He was furious. We couldn't tell anything from it."

Indeed. That's because the people who dreamed up this methodology themselves are getting A's in "obfuscation". With all the problems education in this country has, getting away from basics into touchy-feely trends is a move in the wrong direction.

Luckily, this does not yet appear to have surfaced in California, which usually pioneers fringe proposals. Let's hope it doesn't.



☆☆☆☆☆☆☆☆

ATTENTION THIS IS A PUBLIC CONFESSION!

Your Editor has lied to you...in a grievous fashion. The cover of this newsletter promises a special section on sex harrassment laws. You won't find it. May I blame it on the L.A. Earthquake? Late problems have moved this section to the next issue.

L.A. TRUANCY PROGRAM PAYS OFF FOR ALL CONCERNED

An effort to keep kids with bad attendance records in school in Los Angeles is paying off.

There's a startling correlation between truancy and crime. As Los Angeles Deputy Attorney Brenda English explained it to the Los Angeles Times recently, "Eighty-five percent of all daytime crime is committed by school kids.....Truancy is the most common factor in the profile of those who become adult criminals, even more common than dysfunctional families".

Armed with those statistics, the Los Angeles District Attorney's Office launched a truancy prevention program that has produced encouraging results. Three DAs are assigned full time to elementary and junior high schools where they target kids with the worst attendance records.

Parents of chronic truants are sent letters inviting them to a meeting. At the meeting, no-nonsense DAs inform the parents that school is mandatory and that they could be prosecuted for failing to send their children. The parents are then required to accompany their children to school and sign in with them.

Of 132 chronically truant students at the elementary school where the project was tried, all by one straightened up within the first semester. The one holdout was back in school regularly by the second semester. While it was a necessary element, the strong arm of the law wasn't the only thing involved in the Los Angeles program. Community-based organizations received state grant money to provide family and mental-health counseling, tutorial helps on other services. Parents were even Criminal justice professionals, from U.S. Attorney General given access to a 24-hour hot line to call for help in dealing with difficult or violent children.

The success stories were heart-rending. One mother towing a toddler accompanied her would-be truant son to class every day. In another case a father who couldn't persuade his child to attend class, went alone, so impressing the child that he, too, finally began showing up.

Janet Reno to the lowest cop on the beat, have acknowledged that to many of our limited resources are spent to arrest and incarcerate and too little on prevention. The Los Angeles experiment represents an investment in prevention that deserves attention.



LEGISLATION

LUNDBERG PROMISES COMPLETE LEGISLATIVE RUNDOWN IN NEXT ISSUE !!



LEE LUNDBERG
Legislation

Lee Lundberg has been the mainstay of CASCWA legislative activity over the past few years, and his legislative analyses have been among the most anticipated parts of the Intercom. There are times, however, when there is little material to analyze. This is one of those times ; Lee indicates that the Legislature At present is in its gestation period, and very little hard information is available regarding the legislative session, except for the inevitable rumors, and much anticipation..

and apprehension. The good news is that the year promises some interesting developments, and Lee is already hard at work on one of his famous rundowns. Sooo... don't consider this issue a total loss; hold your breath until April !!! In the meantime, there are a few developments that require your attention. Al Baum presents some cautions on existing (new) legislation, and Lee has passed on a note that urges you, and all of us to drop a line to (your) our U.S. Representative . Do it immijitly !!

☆☆☆☆☆☆

ACTION NEEDED NOW...BY YOU !!!

On June 22, 1993, Senator Tom Harkin (A) and Representative Donald Payne (NJ), reintroduced the Elementary School Counseling Demonstration Act. The bill would authorize the secretary of education to provide \$10 million per year for the next five years in demonstration grants. The bill would also establish an Office of Pupil Services in the U. S. Department of Education.

The act ensures that funded programs will be comprehensive and accountable by requiring that grant applications (of no more than \$400,000 each) would:

- * use an integrated team approach of professionally trained school social workers, school psychologists and school counselors.
- * maintain a student to counselor ratio of not more than 250:1; school social worker ratio of not more than 800:1, and school psychologist ratio of no more than 1000:1.
- *require that school social workers, school psychologists and school counselors spend at least 85% of their work time providing direct services to students and no more than 15% on administrative tasks.
- *design the program to be developmental and preventive
- *convene an advisory board composed of parents, social workers, counselors, psychologists, teachers,

school administrators, and column readers to oversee the design and implementation of the program.

Members and friends of pupil personnel services are encouraged to write Senator Harkin (United States Senate, Washington, D.C. 20510) and Representative Payne (U.S. House of Representatives, Washington, D.C. 20515) with letters of appreciation for their support of PPSC services. Several representatives from California sit on the House Committee on Education and Labor. They are George Miller, Matthew K. Martinez, Xavier Bacerra, Lynn C. Woolsey, Randy (Duke) Cunningham and Howard P. (Buck) McKeon. They could be encouraged to co-sponsor this legislation. A voting member in a District has the greatest clout. Please call. NASW has been working for the bill's incorporation into a measure reauthorizing the Elementary and Secondary Act.

☆☆☆☆☆☆☆☆

CAUTIONS ON THE NEW DISCIPLINE BILLS

As most of you already know, there were 3 Bills Chaptered (Oct.'93) deal with suspension & expulsion, to wit:

- | | |
|-----------------|--------------|
| AB 342(Boland) | Chapter 1255 |
| SB1198(Hart) | Chapter 1256 |
| SB1130(Roberti) | Chapter 1257 |

Chapter 1255 was an urgency Bill and will be "Chaptered out" Jan. 1, '94, the other 2 Bills become effective Jan. 1, '94. All the Bills relate to each other and have to do with Community Schools (County Operated - E.C. 1981), suspension & expulsion (E.C. 48900, 48915, etc.) Chapter 1257 also has to do with district personnel informing teachers of violent pupils (E.C. 49079 ET SEQ.) - better look at this portion of the Bill closely, as there are penalties for failure to inform staff.

EC. 48915 is amended: EC. 48915 (b) stipulates that "any pupil found to be in possession of a firearm at school or at a school activity off school grounds (shall be recommended for) expulsion...(by) the governing board." Section 48915 (c), (d), & (e) also have been added and/or amended and relate to other expulsion criteria, danger status, etc.

Pupils that are expelled by 48915 (a) (1) - causing serious physical injury to another person, except in self-defense, or 48915 (a) (2) - "Possession of any knife, explosive or other dangerous object of no reasonable use to the pupil at school or at a school activity off school grounds" will/can be referred to and enrolled in County Community School, as-per the (amended) Section 1981 (c).

You should pay close attention to E>C> 48915.1 & 48915.2 : these sections have to do with previously expelled students, procedures for re-hearings, etc.

Notice to schools, Fresno County, Al Baum. CWA Administrator

" A STEP BEYOND.... PLANNING FOR SAFE SCHOOLS"

By Lee Lundberg
Law Enforcement Partnership Consultant

Every community wants safe schools for their children. The quality of life is often measured against the real or perceived quality of our schools. No debate has had greater impact than the one surrounding the issue of school safety and how to address the communities' fears. Traditionally, most schools think of school safety in terms of school site crime by students and non-students in addition to the physical plant barriers to create a safe school.

I would like to take you "A Step Beyond," the physical and criminal considerations. Safety issues interfere with the education of our children. Therefore, school safety planning must go "A Step Beyond" and consider the total learning environment including the student, classroom campus, teacher, parent and community. As usual, someone has already thought of this dilemma and created the School/Law Enforcement Partnership under the joint sponsorship of the Attorney General, Dan Lundgren and the interim Superintendent of Public Instruction, Bill Dawson. A Safe Schools Planning Guide for Action has been published and is available through the Crime Prevention Center of the Attorney Generals Office by calling (916 324-7863).

Let's take a look at the "A step Beyond" reasoning and process. First, we must accept the premise that schools cannot meet the challenge alone. Creating safe and orderly campuses for teachers to teach and students to learn requires participation of school personnel, law enforcement, juvenile justice agencies, businesses, parents and the community. We must also acknowledge the complexity of the challenge in the face of changing family structure, gangs, drugs, alcohol and weapons.

In 1985, Supreme Court Justice Lewis Powell said, "Without first establishing discipline and maintaining order, teachers cannot begin to educate the students. And apart from education, the school has the obligation to protect pupils from mistreatment by other children and also to protect teachers themselves from violence by the few students whose conduct in recent years has prompted national concern". (New Jersey v.TLO, 1985)

What is a safe school? Safe schools are orderly and purposeful places where students and staff are free to learn and teach without the threat of physical and psychological harm. Why is planning for safe schools necessary? Planning for safe

schools is an essential and important process to confront the issues that interfere with learning and the operation of the school. Who is responsible for school safety? Schools are increasingly at the center of society's efforts to cope with pressing social problems and no longer isolates centers of academic training. In summary, safe school planning needs to be broad based in people and purpose.

What are the components of the safe school model that allows the instructional leader to understand how to take "A Step Beyond...? Experience and on-going research provide the best basis for safe school planning and reveals the most influential components of the school environment. The framework for the safe school model will only be described in this article. Readers should call the Crime Prevention Center to obtain a copy of the full planning description. The four components are:

1. Personal Characteristics of the Students and Staff

These characteristics reflect the social and economic conditions of the community and affect the schools' physical, social and cultural environments. These characteristics include the ethnic and cultural backgrounds, health concerns and life experiences that students, teachers, administrators and other school personnel bring to the school.

2. The Schools' Physical Environment

The schools' physical environment is the most traditional school safety component. It includes security practices, such as required public signs, lighting fencing and alarms. Maintenance of the building and grounds is also vital.

3. The Schools' Social Environment

The previous two components create the setting for safe schools. However, it is within the schools' social environment that the dynamics of interpersonal relationships among students, teachers, administrators and parents are formed. This component also evaluates the decision making structure.

4. The Schools' Cultural Environment

The schools' cultural environment is perhaps the most accurate measure of the overall climate of the school. It includes the implicit assumptions, expectations and knowledge that the students, parents and staff have about how the school should function and how the school should function and how individuals in school should act. A positive cultural environment includes a high level of respect, affiliation and bonding among students and staff.

How does your school or district measure up to taking "A Step Beyond" the traditional conceptions for safe schools? Will you take on the safe schools' challenge by going "A Step Beyond"???

CASCWA Newsletter Editor
2937 E. San Gabriel
Fresno, CA 93726

BULK RATE
U.S. POSTAGE
PAID
FRESNO, CA 93703
PERMIT NO. 1091

CALIFORNIA ASSOCIATION OF SUPERVISORS OF CHILD WELFARE AND ATTENDANCE
199__ - 199__ **MEMBERSHIP APPLICATION FORM**

PLEASE PRINT

REGIONAL AFFILIATION: *(check one)*

- | | |
|---|--|
| <input type="checkbox"/> Delta Sierra Section | <input type="checkbox"/> San Joaquin Section |
| <input type="checkbox"/> Bay Section | <input type="checkbox"/> Southern Section |

NAME _____
(LAST) (FIRST)

BUS. ADDRESS _____ WORK PHONE () _____
(STREET) (CITY) (ZIP)

SCHOOL _____ DISTRICT _____ COUNTY _____

HOME ADDRESS _____ HOME PHONE () _____
(STREET) (CITY) (ZIP) *(optional)*



SEND TO:

GIL AWALT, Vice President-Membership
Child Welfare & Attendance
Clovis Unified School District
55 Shaw (Suite 207)
Clovis, California 93612
(209) 297-7382

DUES: *(check one)*

- | | |
|--|-----------------------------|
| <input type="checkbox"/> ACTIVE | \$30.00 per membership year |
| <input type="checkbox"/> ASSOCIATE | \$20.00 per membership year |
| <input type="checkbox"/> INSTITUTIONAL | \$30.00 per membership year |
| <input type="checkbox"/> RETIRED | \$10.00 per membership year |
| <input type="checkbox"/> HONORARY LIFE | |
| <input type="checkbox"/> Please send receipt | |